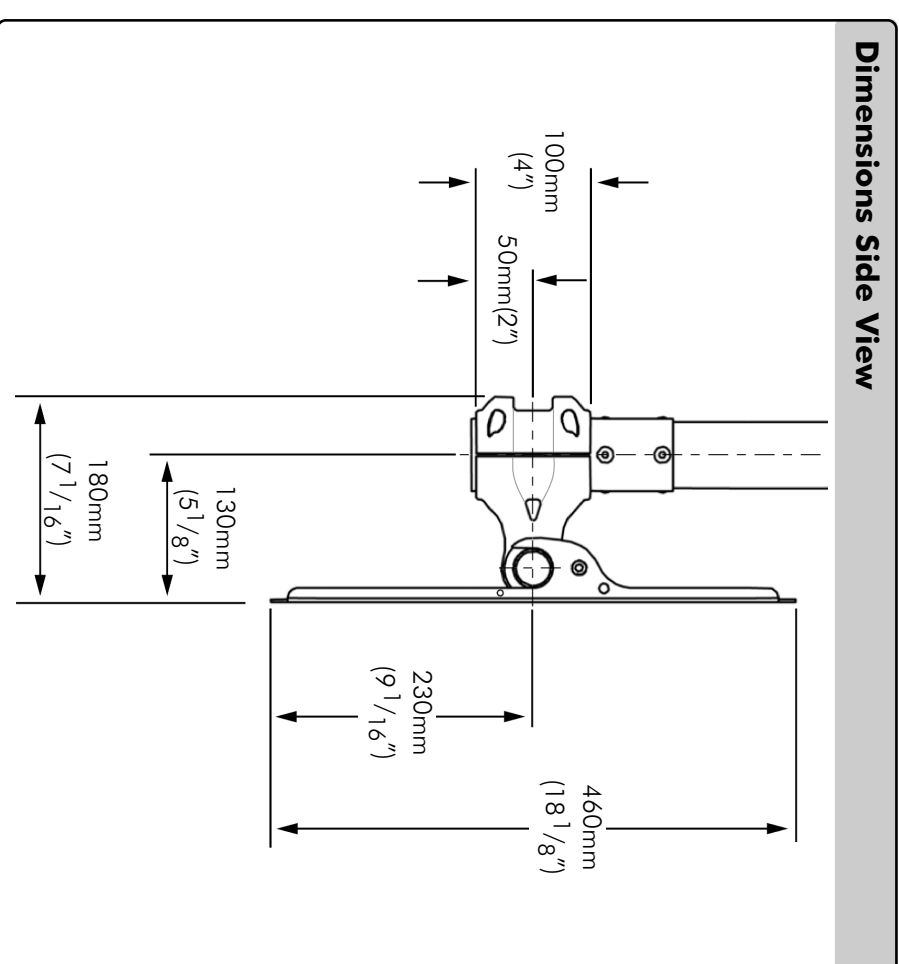


# Technical Specifications

# TELEHOOK®

31-55 Tilt Ceiling

## Dimensions Side View



Telehook 31-55 Tilt Ceiling supports a maximum weight of 60kgs (132lbs)

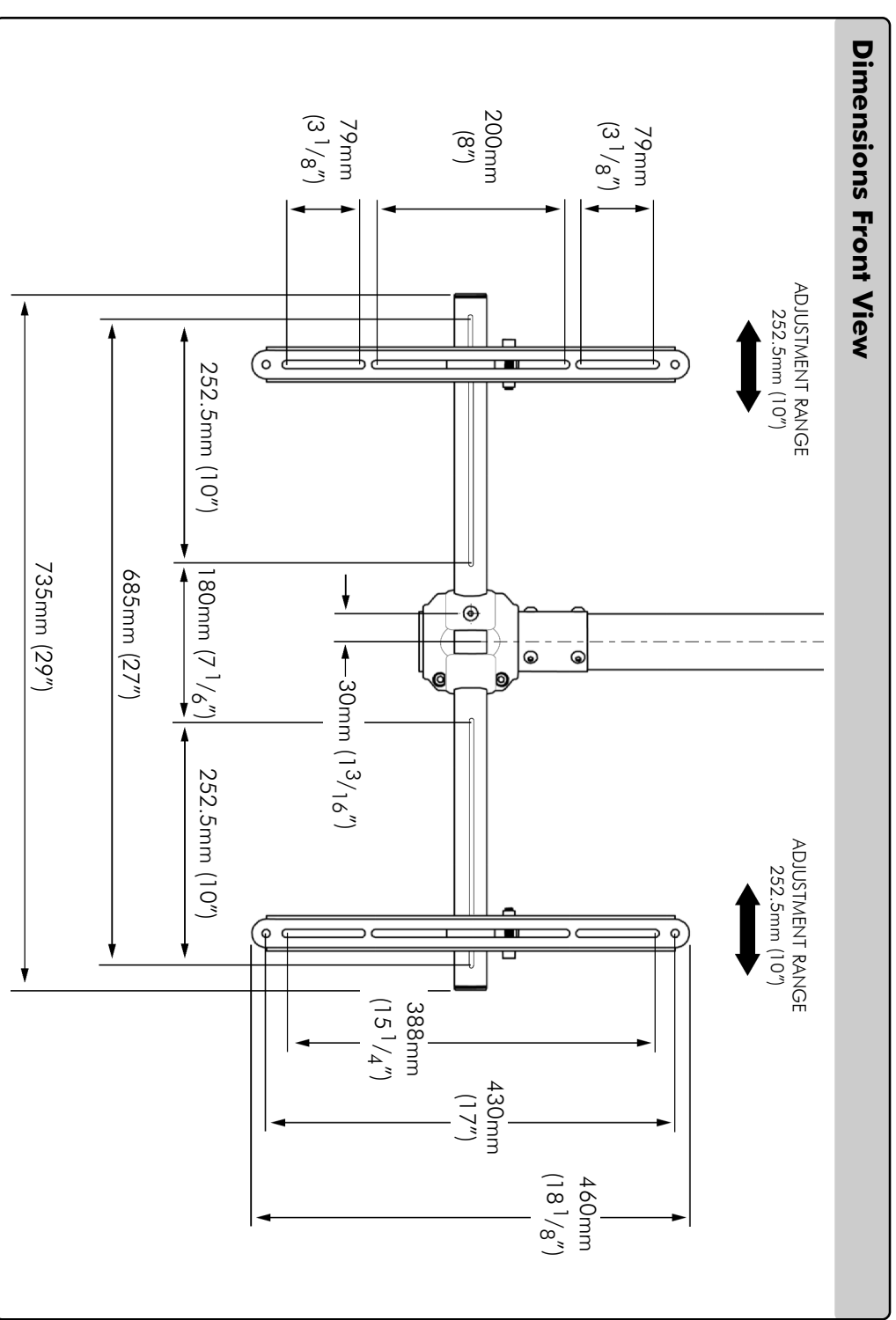
### NOTE:

This product is to be used in conjunction with Telehook 31-55 Tilt Wall.

The Telehook 31-55 Tilt Ceiling is designed to suit most VESA and non-VESA compliant displays.

The installer should satisfy themselves that the ceiling is strong enough to support the Telehook 31-55 Tilt Ceiling unit of 14kgs (31lbs) plus the maximum allowable monitor weight of 60kgs (132lbs). Total of 74kgs (163lbs).

## Dimensions Front View

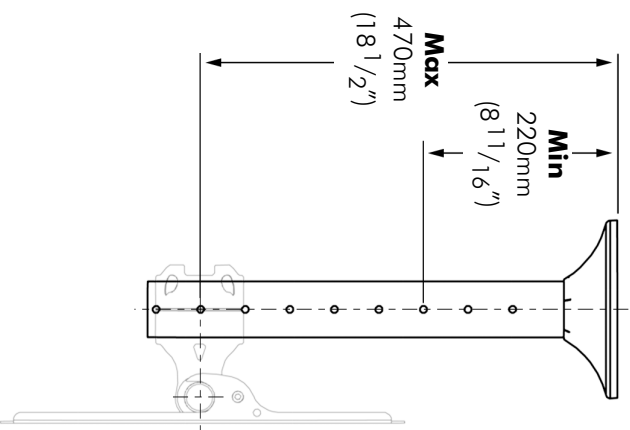


An Equal Opportunity/Affirmative Action Employer

As TFT Manufacturers are constantly releasing new monitor models, Atdec does not accept responsibility if the VESA mounting does not comply with the international standards. Due to continuing product development, the manufacturer reserves the right to alter specifications without notice. Published: 19 09 06 ©

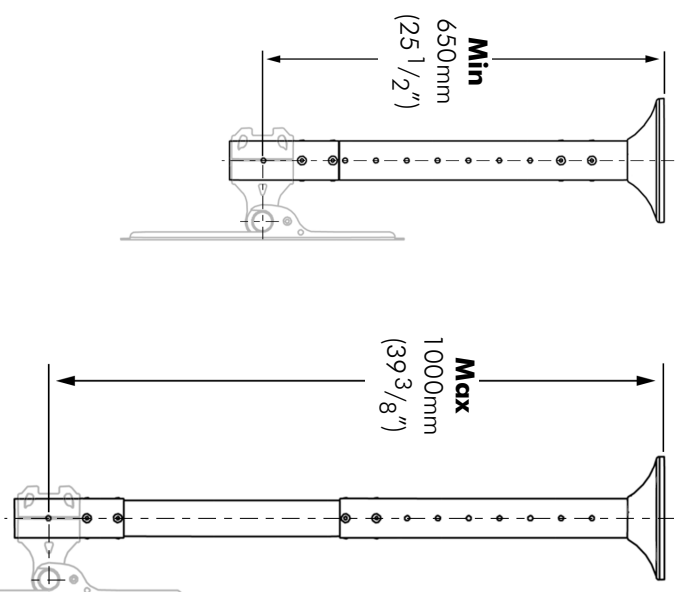
## Hanger Settings

**Option 1: 220mm (8<sup>11</sup>/<sub>16</sub>" ) - 470mm (18<sup>1</sup>/<sub>2</sub>" )**



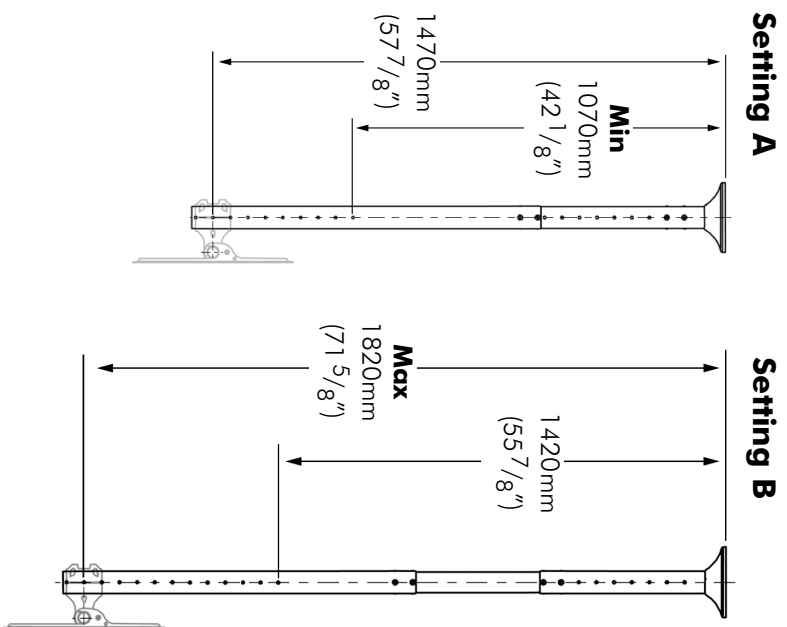
6x50mm (2") incremental positioning options.

**Option 2: 650mm (25<sup>1</sup>/<sub>2</sub>" ) - 1000mm (39<sup>3</sup>/<sub>8</sub>" )**



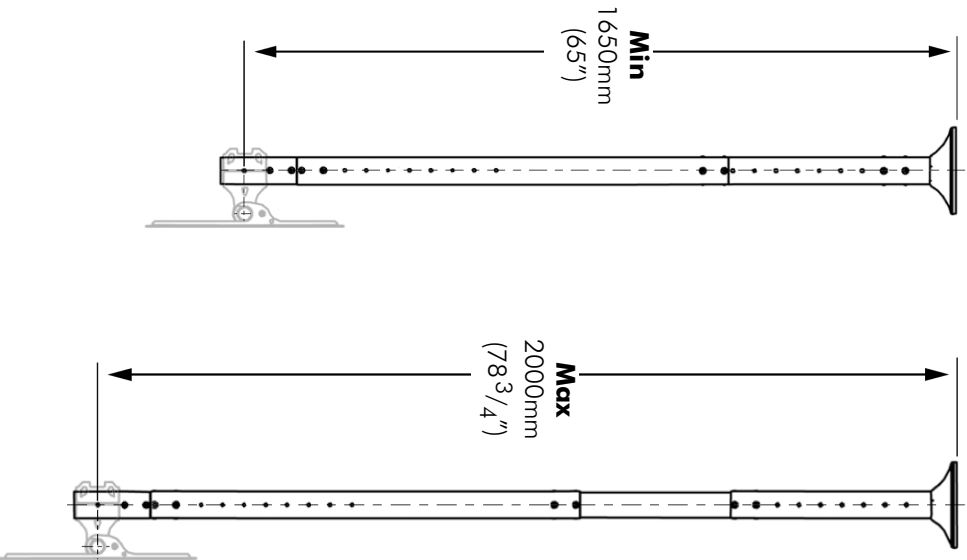
8x50mm (2") incremental positioning options.

**Option 3: 1070mm (42<sup>1</sup>/<sub>8</sub>" ) - 1820mm (71<sup>5</sup>/<sub>8</sub>" )**



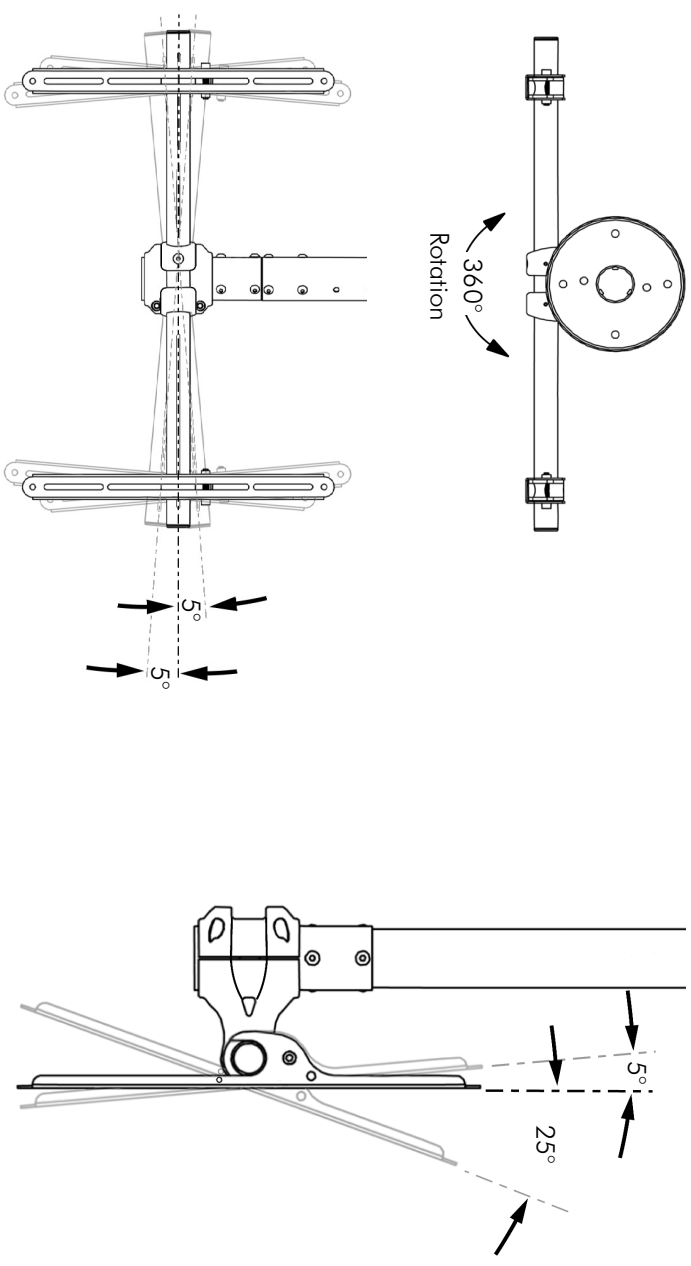
**A: 9x50mm (2") incremental positioning options.**  
**B: 9x50mm (2") incremental positioning options.**

**Option 4: 1650mm (65" ) - 2000mm (78<sup>3</sup>/<sub>4</sub>" )**

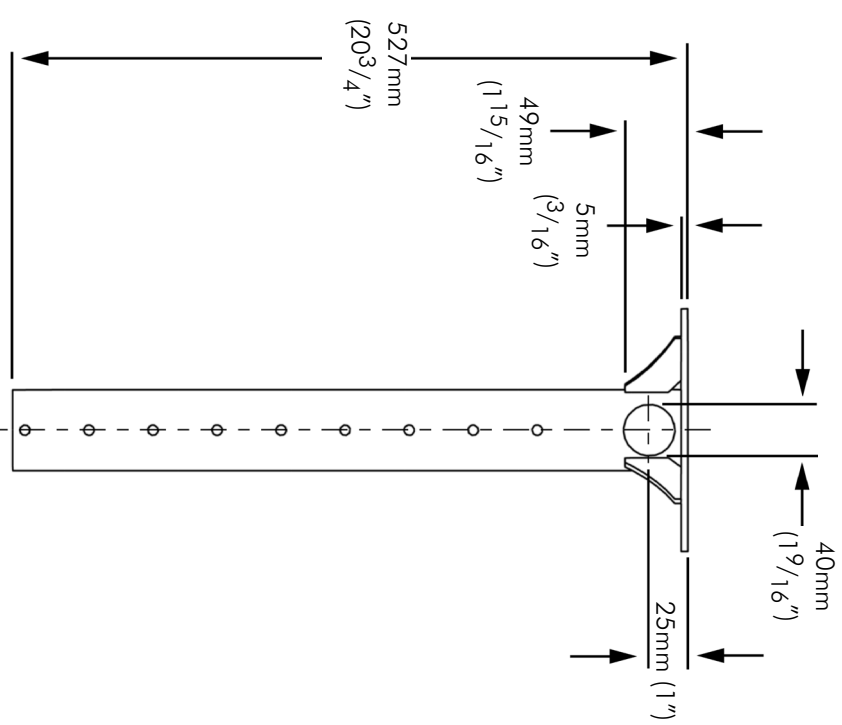


8x50mm (2") incremental positioning options.

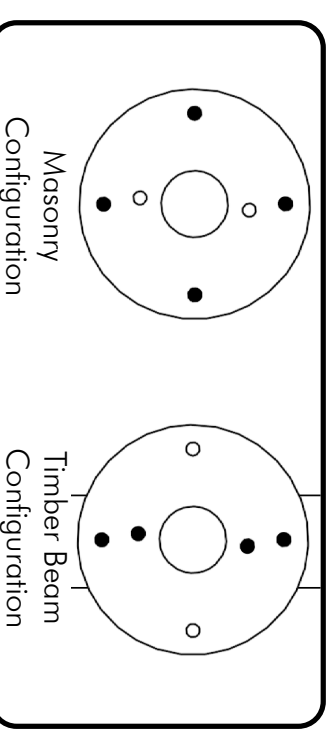
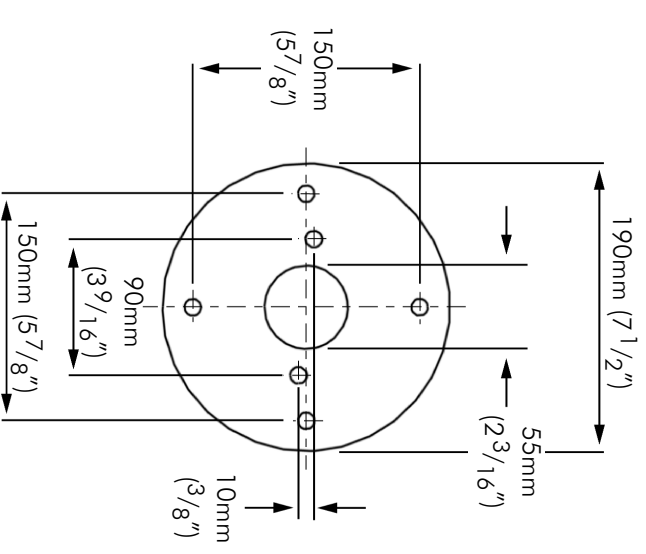
## Range of Movement



## Ceiling Mount



### CEILING PLATE HOLE PATTERN



### MOUNTING HOLE PATTERNS